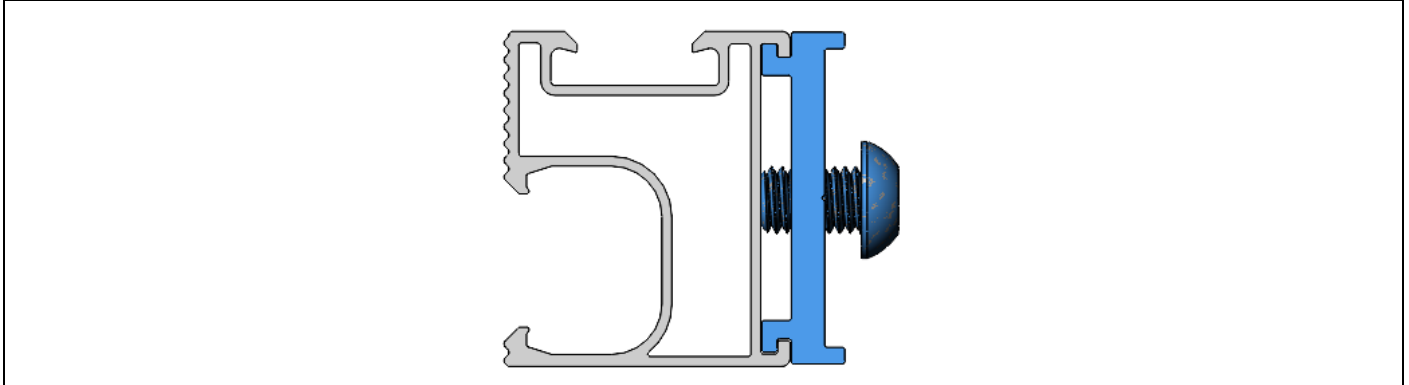


## Splice for DC Rail 40

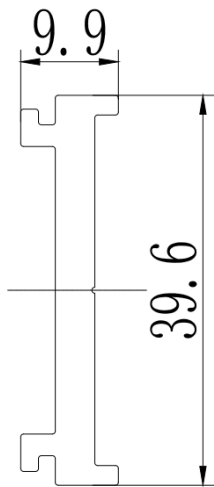
### Assembly



### Component



### Technical Specification

Application	Splice for DC Rail 40	
Screw Specification	2 x Button Head Torx Screws M8*12	
Dimensions	L200mm*W9.9mm*H39.6mm	
Weight	0.116 Kg	
Packaging	50 units per pack, 4 packs (200 units) per carton	
Material	Main parts: AL6005-T5 Screws: SUS 304	
Color	Silver	
Finish	Anodized (no less than 10 µm, excluding machined surfaces)	
Standard	GB50797   AS NZS1170.2   EN1991   JISC8955   ASCE 7-10	